

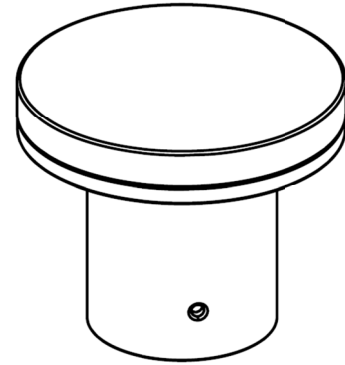
Basic Performance of Luminaires:

Luminaire Protection Rating: IP65

Luminaire Input Voltage: Refer to Label Parameters

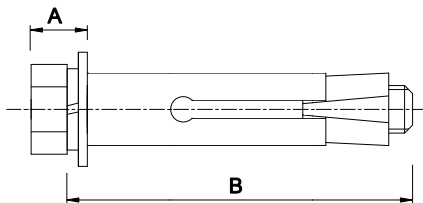
Installation Precautions:

1. Please read through the Instructions before installation;
2. Installation of this luminaire must be carried out by personnel with appropriate installation qualifications;
3. To avoid the risk of electric shock, please ensure that the power is turned off before installation and maintenance;
4. The installation of luminaires must comply with local laws and regulations;
5. Suitable for indoor and outdoor installation use;
6. Please keep this manual properly for future use.



Luminaire Installation Methods and Steps:

1. The installation requires M5 or M6 expansion bolts with dimensions as specified in Figure 1 (these bolts need to be purchased by the customer).



Select M5 or M6 expansion bolts,
Requirements: A (bolt head thickness + spring washer thickness + flat washer thickness) \leq 6.5mm, B (bolt length) \geq 60mm

Figure 1

2. Remove the packaging, take out the luminaire, and use an Allen wrench (2.5mm) to loosen the fastening screws on the side of the base to remove the installation chassis. Drill the holes required for the expansion bolts on the installation surface as shown in Figure 2, ensuring that the hole depth is greater than the length of the expansion bolt. Then, thread the pre-installed connection wires (which need to be purchased separately) through the installation chassis. Insert the expansion bolts into the corresponding installation holes and secure the installation chassis.

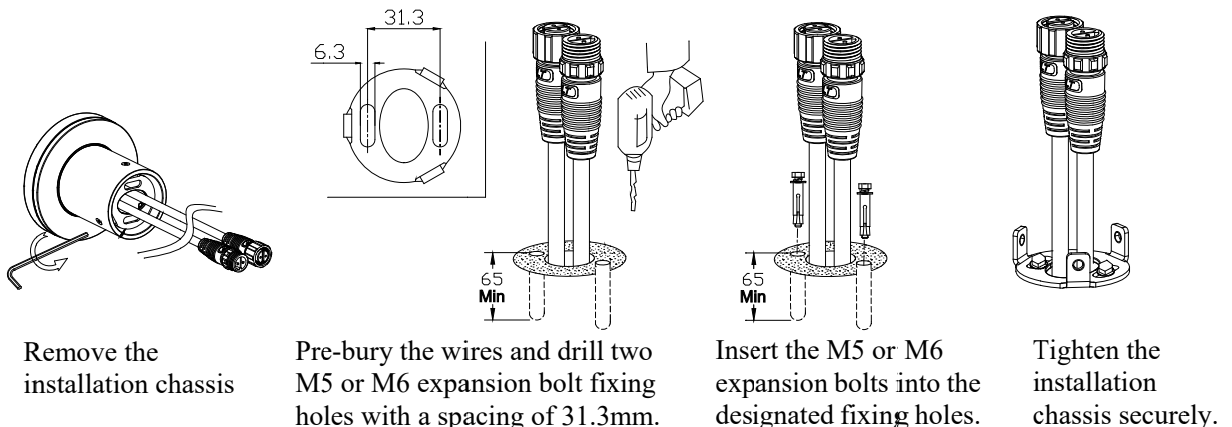


Figure 2

After the chassis is securely installed, connect the male and female ends of the lamp body with the male and female ends of the pre-buried wires, and install the lamp base on the chassis, as shown in Figure 3.

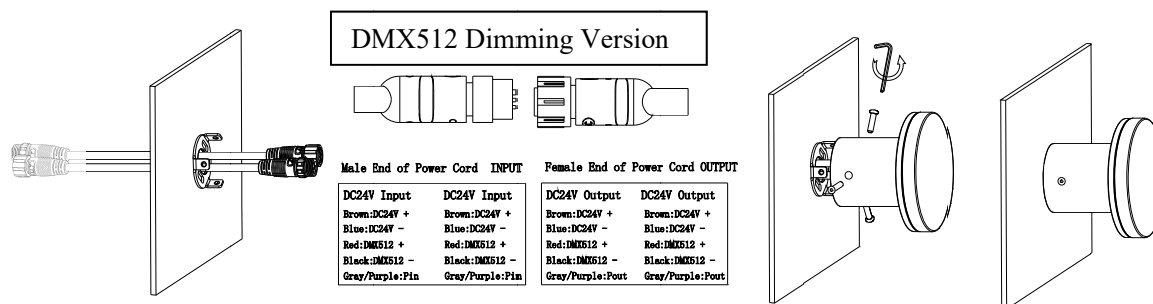


Figure 3

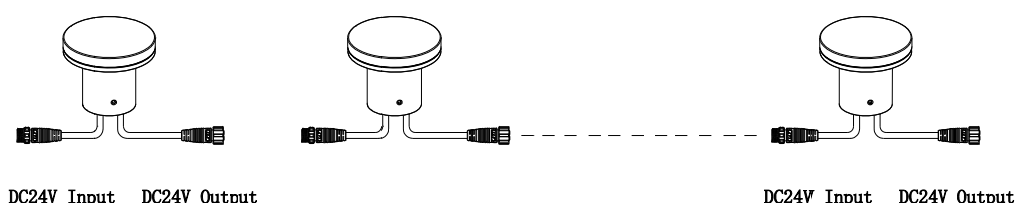
Wiring Method:

- a) At both ends of the luminaire, male and female connectors are separately wired. The input end features the male connector, which receives DC24V direct current. The input current for each channel should not exceed 2A. A maximum of nine luminaires can be connected in series. The output end is equipped with the female connector, which connects to the male connector of the adjacent luminaire's input end. It is crucial to note that the input and output ends cannot be connected in reverse.

Recommendations:

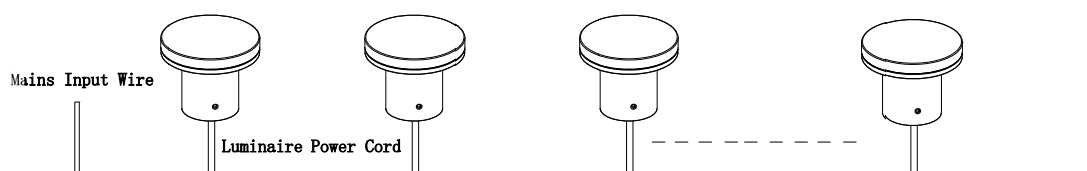
1. The ground wire of the controller should be connected to the negative terminal of the luminaire's DC24V power supply.
2. The number of luminaires connected in series per signal line should not exceed 32. If there is interference, please add an amplifier based on the on-site installation conditions.

Note: The signal-end dimmer must use a controller with an output DMX signal of SELV. The two poles of the controller's signal output end must be able to withstand a 24V voltage withstand test. Additionally, the same dimmer can only be used for this type of luminaire and cannot be mixed with other types of dimmable luminaires.



This end is magnetic.

- b) **220V AC Wiring Method:** The input wire of the luminaire is directly connected to the mains wiring. After wiring, the connection points of the wires should be properly sealed to prevent water ingress.



Replacing and Repairing Luminaires:

1. It is necessary to turn off the power supply and allow the luminaire to cool down completely before performing any operations.



-
2. The disassembly process is the reverse of the installation order.

Precautions:

1. All wiring must comply with national installation specifications and standards. Ensure that all connections between wires are properly made and are sealed to prevent water ingress.
2. The external wiring of the luminaire cannot be replaced. If the wiring is damaged, the luminaire will be destroyed. Replacement of this wiring must comply with CCC standards and be performed by qualified personnel to avoid any hazards.
3. Do not attempt to dismantle the interior of the luminaire without authorization. The light source of this luminaire is non-replaceable. When the light source reaches its end of life, the entire luminaire should be replaced.