

Product model:

This installation instruction is applicable to the LIGNE PRO Large inlay lamp series, models include AOR140DL* (Trimmed Downlight), AOR150AL* (Trimmed Adjustable), AOR140WL* (Trimmed Wall Washer), etc. The "*" contains different power, different control system, different color temperature, different surface frame, different appearance color information.

Note:

1. Please read the instructions carefully before installation;
2. Ask a professional electrician to install;
3. In order to avoid the danger of electric shock, please confirm to turn off the power supply before installation and maintenance;
4. The lamp can be embedded in the installation of the ceiling surface, but do not cover the heat insulation and combustible materials above the lamp and the lamp to avoid causing a fire;
5. Do not install the lamp on the unstable and unstable skylight to avoid the lamp falling;
6. Keep the manual for reference.

Luminaire installation:

Lamp specifications and models	Dimensions of ceiling openings (mm)	Minimum installation space mm (h)	Ceiling thickness mm
AOR140DL-06*	95×52	104	5~25
AOR150AL-06*	106×63	115	5~25
AOR140DL-11*	171×52	104	5~25
AOR140WL-11*		104	5~25
AOR150AL-11*	183×63	115	5~25
AOR140DL-22*	323×52	104	5~25
AOR140WL-22*		104	5~25
AOR150AL-22*	336×63	115	5~25
AOR140DL-32*	473×52	104	5~25
AOR140WL-32*		104	5~25
AOR150AL-32*	490×63	115	5~25

1. Select the corresponding ceiling hole size according to the lamp specifications and models, open the installation hole of the infinity screen on the ceiling, and then lock the infinity screen on the ceiling board through the self-tapping screws, and finally smooth the edge of the infinity screen around the lime, as shown in Figure 1.

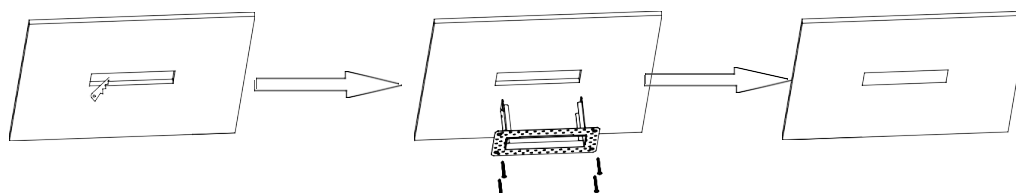
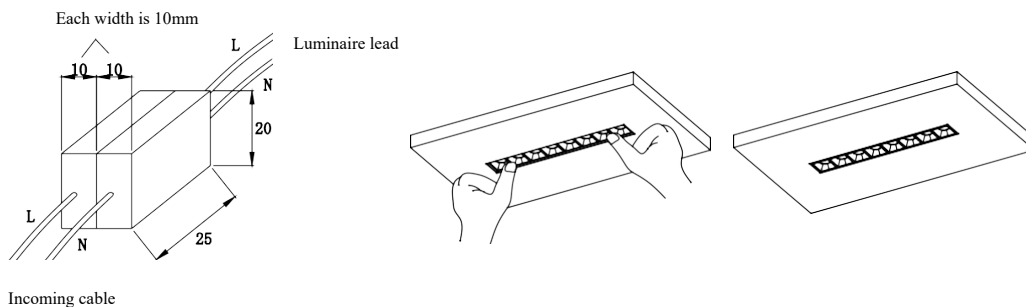


Figure 2

2. Open the box cover of the driver input terminal, insert the positive and negative mains terminals respectively into the L and N terminals of the wiring terminals, and reinstall the box cover after the wiring is complete. If the lamp is dimmed, open the box cover at the output end of the driver, insert the dimming control cable into the 10V+ and 10V- holes on the wiring terminal, and reinstall the box cover after wiring is complete.
3. The driver of the lamp comes with a lead wire, and the connection lead needs to be connected with an independent terminal block (refer to Figure 2 schematic wiring), and the size of each terminal subseat should not be less than 10x20x25mm.
4. After connecting the wire, first put the drive into the ceiling through the opening hole, and then put the lamp into the opening hole of the boundless mesh board, press slightly with your hand for a distance until you hear the sound of "ticking", and install the lamp to the designated position, as shown in Figure 3, Figure 4, Figure 5.
5. When you need to remove the lamp from the ceiling, press the lamp with your hand to hear the "ticking" sound, and the lamp is separated from the infinity screen.



Lighting lead (L, N) and terminal block wiring diagram

Figure 2

Lamp adjustment Angle:

1. For the angled type of lamps, the lighting Angle can be adjusted bidirectionally. Insert a flat-head screwdriver into the slots on both sides of the luminaires to allow adjustment of the lighting Angle within a range of $\pm 35^\circ$, as shown in the following picture.

