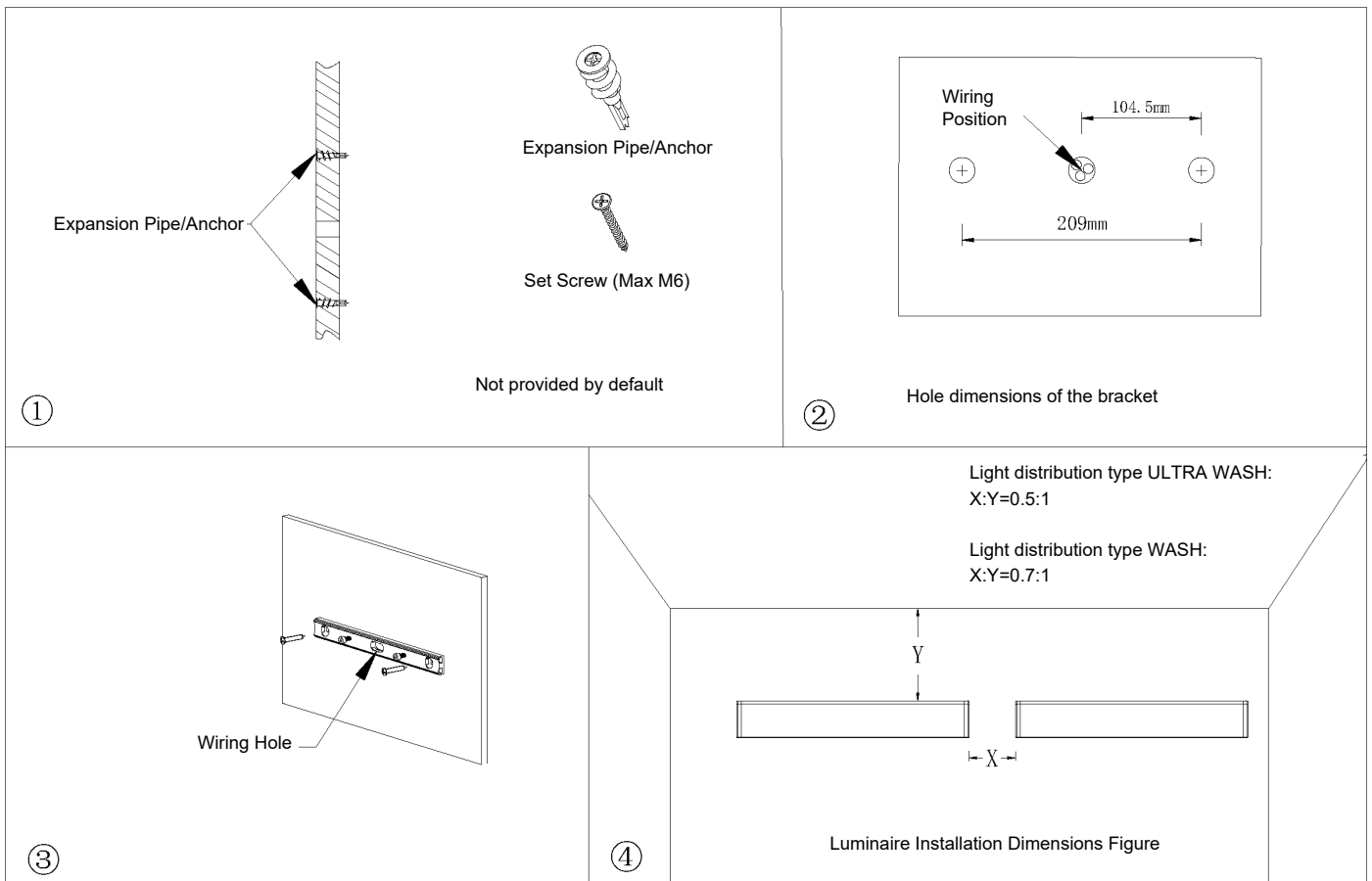


## Installation Precaution:

1. Please check the instruction manual carefully before installation, professional electrician is required to install this product.
2. Please ensure waterproof treatment at the wiring of outdoor fixtures.
3. In order to avoid the risk of electric shock, please make sure the power is off before installation and maintenance.
4. Please follow the local laws and regulations when installing the luminaires.
5. Please keep the manual for further reference.

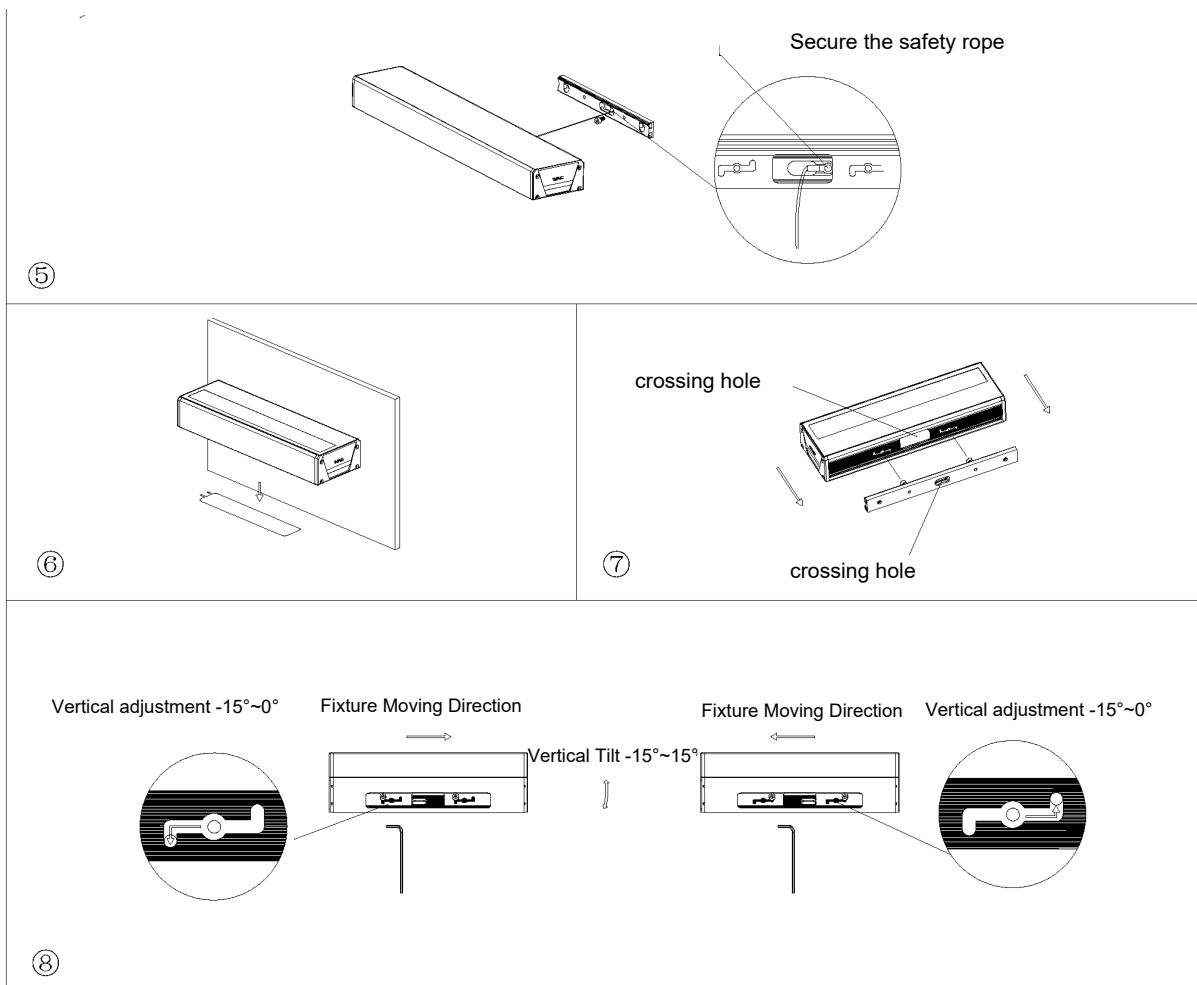
## Fixture Installation:

1. As shown in Fig. ① and ②: Drill holes on the mounting position according to the holes on the mounting bracket, install the expansion pipe/Anchor (self-provided), and reserve holes for wires. Take the fixture mounting bracket and fix it to the expansion pipe/Anchor with self-tapping screws ( self-provided) as shown in Fig. ③.
2. Refer to Figure 4 for dimensions of connections between fixtures.



3. Secure the safety rope to the mounting bracket as shown in Figure ⑤.

4. Fixture Installation: As shown in Figure ⑥, the back cover of the fixture is opened, install the fixture into the mounting bracket that has been installed. Align the round hole position of the fixture with the round head socket head cap screw on the bracket as shown in Figure ⑦. After passing the wire through the center oval hole on the mounting bracket, move it to the left or right to lock it. As shown in Figure 8, the angle of the fixture can be adjusted up or down 15 degrees, and after adjustment, tighten the screws with a hexagonal wrench and cover the back cap.

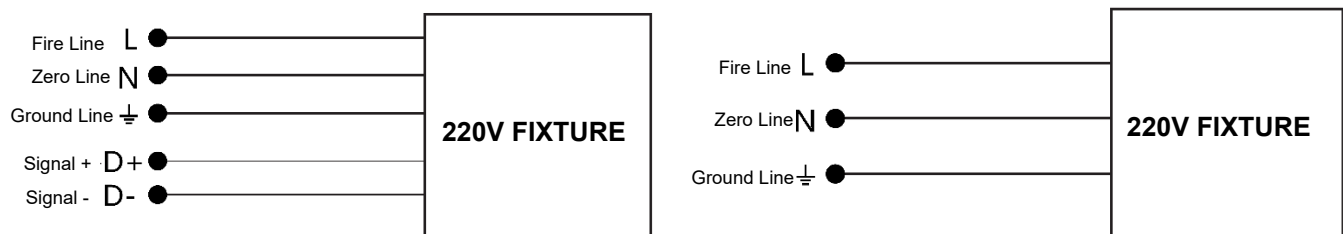


Note: If the glass shield is found damaged during installation, replacement of the fixture is required. Please ensure that the wiring is properly waterproofed.

### Wiring Schematic:

Connect the mains power input cable to the fixture power cable. Connect the dimmer and dimmer wire together (dimmer models only have dimmer wire).

Note: The wiring must be waterproof. The yellow-green wire is the ground wire, the brown wire is the fire wire, and the blue wire is the zero wire. Red is positive and black is negative for dimming line. The "D+" and "D-" markings (dimmer models only) are shown in the figure.



Authorized by WAC Lighting Corporation, USA, holder of the "WAC" trademark.

China Marketing Headquarters: WAC Lighting (Shanghai) Co, Ltd.

Address: Room102, No.14, Lane 299, Bi Sheng Road, Shanghai 201204, China

Factory: Manufactured WAC Lighting (Dongguan) Co, Ltd.

Address: No.390, Qingfeng Road, Qingxi Town, Dongguan, Guangdong 523653, China