

## Product model:

This installation manual is applicable to the ELANA PRO infinity lamp series, with models including ADLH32 \* (circular), ADLH36\* (square), AMTH36 \* (square double head), etc. "\*" includes information on different powers, control systems, color temperatures, face frames, and appearance colors of the lamp.

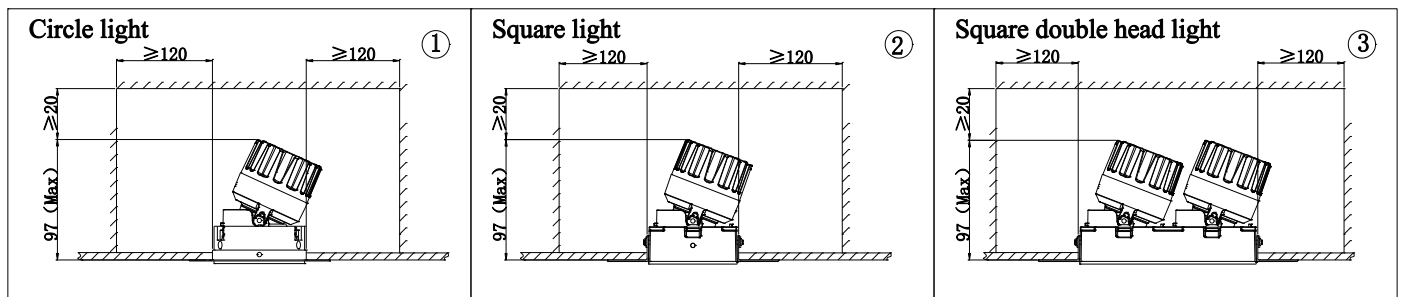
## Notes:

### Installation Precautions:

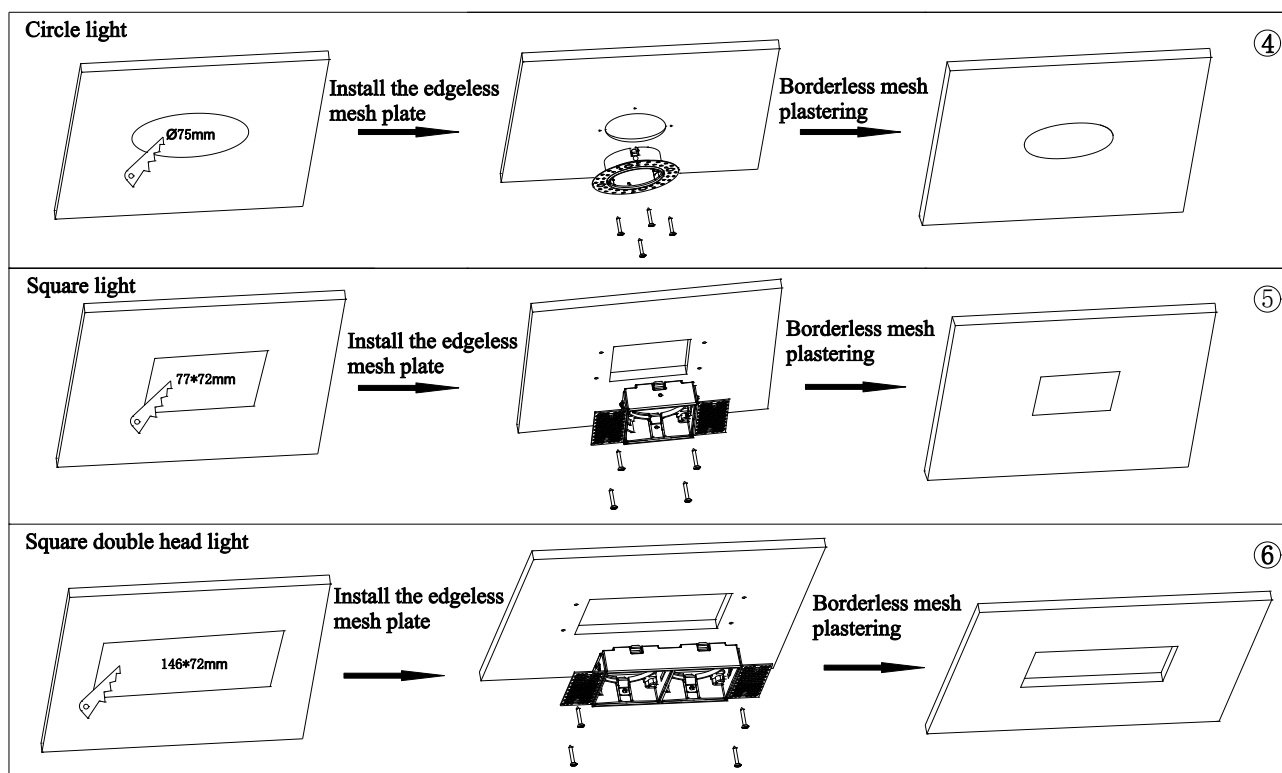
1. Please read through the Instructions before installation.
2. The product should be installed by a professional electrician.
3. Make sure the power supply is cut off before installation and maintenance, to avoid the risk of electric shock.
4. The light can be recessed on the ceiling, where sufficient space must be reserved for installation. Do not cover the light with any thermal insulation or consumable articles to avoid fire hazards.
5. Do not install the light on an unstable or unsolid skylight, to avoid falling off.
6. Please keep this Instruction properly for future reference.

## Light Installation :

1. Confirm that there is sufficient space on the ceiling to install lighting fixtures, Circular lighting fixtures as shown in Figure ①, Square lighting fixtures as shown in Figure ②, Square double head as shown in Figure ③ (unit: mm)

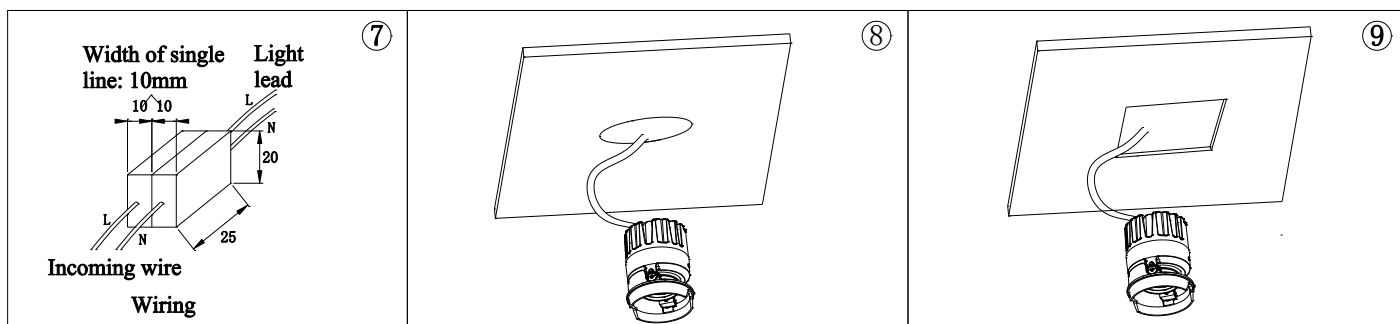


2. Dig a  $\phi$  75mm circular hole for circular lighting, insert 4 plastic anchors into the ceiling, the mesh assembly is locked to the ceiling by self-tapping screws, and finally the mesh is smoothed around the mesh with lime, as shown in Figure ④; Dig a 77 \* 72mm square hole for square lamps as shown in Figure ⑤, The same applies to the installation of the edgeless mesh board; Dig a 146\*72mm square hole for Square double head lamps as shown in Figure ⑥, The same applies to the installation of the edgeless mesh board.



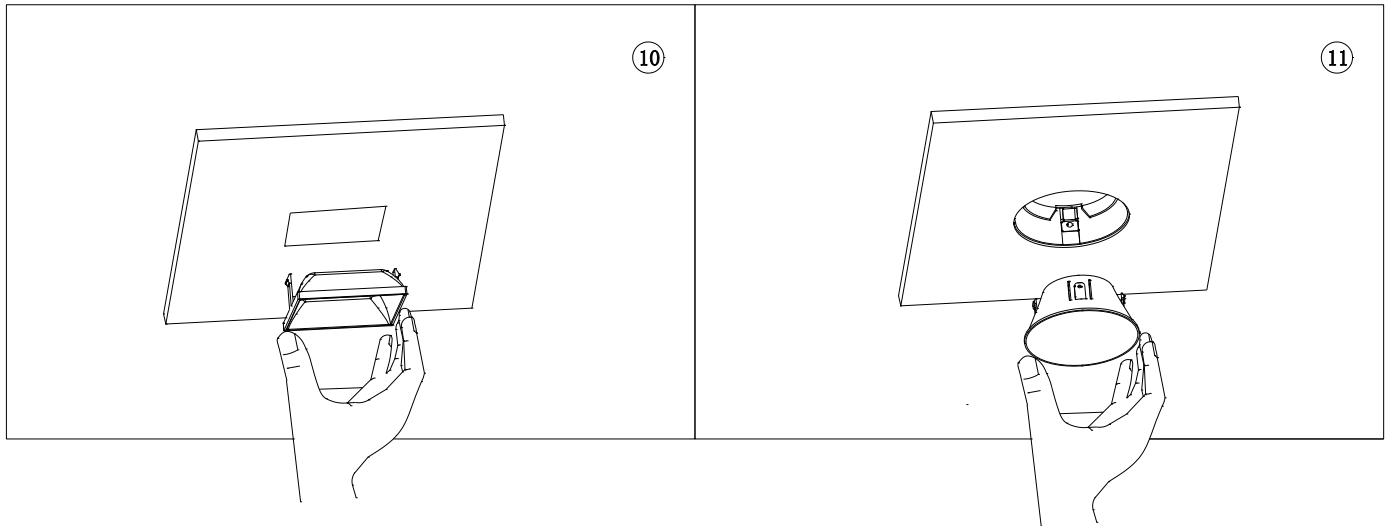
3. If the driver of the light comes with lead wires, and the leads need to be connected with an independent terminal block (refer to Figure 3 for wiring), the size of the terminal block for each line should not be less than 10x20x25mm. Connect the power cord to the driver, insert the wire into the ceiling, and use both thumbs, index and middle fingers to press the spring towards the axis of the light fixture until the spring enters the ceiling hole.

Installation of non electrical series lighting fixtures: The lighting fixtures have brown blue lead wires and cannot be directly connected to 220V AC power; The customer provides their own electrical appliances, which need to be matched with a light source



## Reflector installation and lamp adjustment:

1. Aligning the reflect cover with the locking position it can be directly inserted into the lamp by hand, and the buckle can be tightened as shown in Figure ⑩ ⑪。



2. The lighting fixture can be adjusted 360 degrees horizontally and 0-21 degrees vertically. The angle needs to be adjusted before installing the reflector cover
  - (1). From the light outlet of the lamp, the rotating frame can be seen upwards, and horizontal angle adjustment can be achieved with two fingers;
  - (2). After adjusting the horizontal direction, use your index finger to adjust the angle and orientation of the lamp body, which can achieve an angle adjustment of 0-21 degrees;
  - (3). After adjusting the angle, simply clip in the reflector cover and pay attention to the direction of installation of the reflector cover.