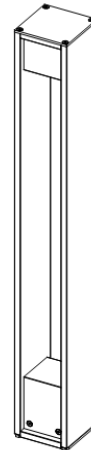


Luminaire performance:

IP Rating:	IP65
Insulation Level:	Class I
Input:	AC 220-240V

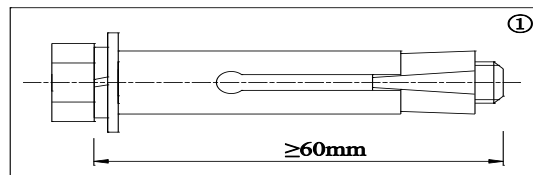


Installation Precautions:

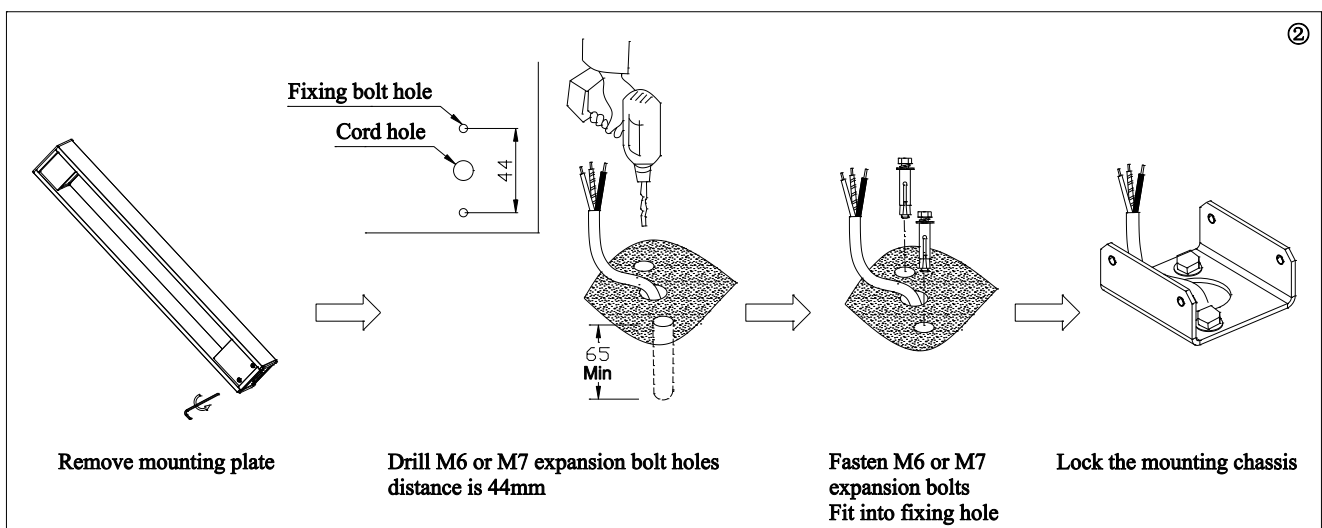
1. Please read through the Instructions before installation.
2. The product should be installed by a professional electrician.
3. Make sure the power supply is cut off before installation and maintenance, to avoid the risk of electric shock.
4. Install lamps in accordance with local laws and regulations.
5. Suitable for indoor and outdoor installation.
6. Please keep this Instruction properly for future reference.

Light Installation and Wiring:

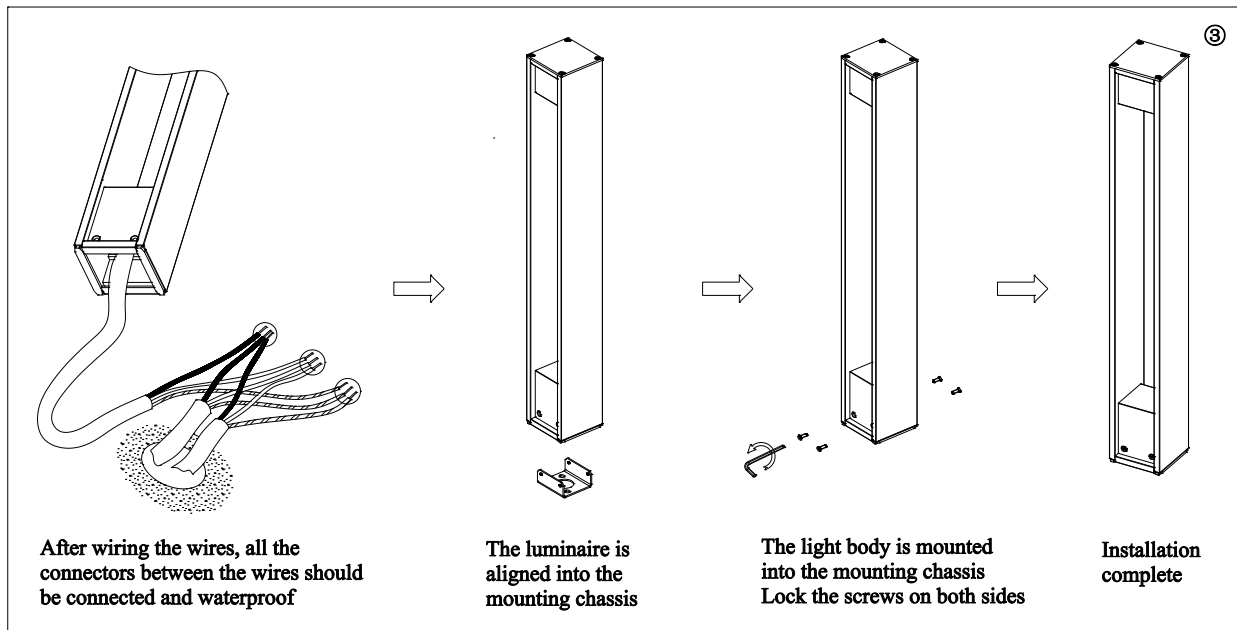
1. the installation needs to be equipped with M6 or M7 expansion bolts as shown in Figure 1 (the bolts need to be purchased by customers);



2. Unpack, take out the lamp, loosen the fastening screws on both sides of the bottom of the lamp with an Allen wrench (3.0mm), take out the installation chassis, and drill the holes required for the expansion bolts on the installation surface as shown in Figure 2. Insert the expansion bolts into the corresponding mounting holes and lock the mounting chassis;



3. After the installation chassis is fixed, connect the lamp wire with the mains power supply. The wiring should be waterproof protected, and the base of the lamp body should be installed on the installation chassis, as shown in Figure 3;



Replacement and repair of lamps:

1. Turn off the power first, and then operate the lamp after it is fully cooled;
2. The disassembly process is opposite to the installation sequence.
3. If the lamp fails, please contact the after-sales department of the manufacturer for assistance.
4. The replacement or maintenance process must be operated by qualified personnel;
5. Do not disassemble the interior of the lamp without authorization;

Note:

1. If the glass is found damaged during installation, it must be replaced; Please contact the manufacturer's after-sales department for assistance;
2. All wiring should meet the national installation standards, and the connection joints between all wires should be connected and waterproof treatment;
3. The external lead of the lamp can not be replaced, if the lead is damaged, the lamp is damaged, the replacement of the line should meet the CCC standard;
And require qualified personnel to replace and connect to avoid hazards;
4. If the external soft cable of the lamp is damaged, the cable shall be replaced and connected by the manufacturer or similarly qualified personnel;
5. Do not disassemble the interior of the lamp without authorization;
6. The light source of this luminaire is not replaceable; When the light source reaches the end of its life, the entire luminaire should be replaced.