

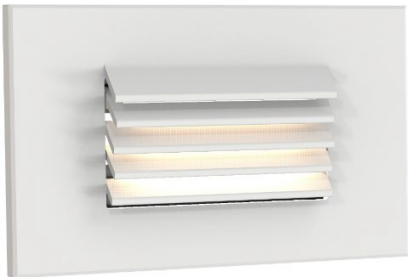
LEDME - MODEL: AWL120
2" Recessed Adjustable Downlight

WAC

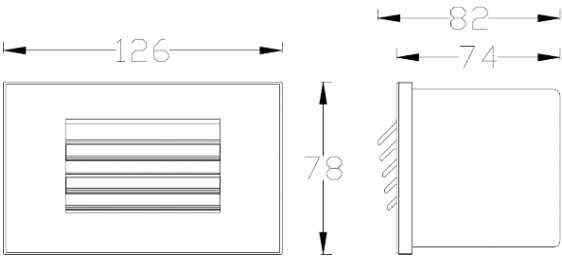
PROJECT:

TYPE:

Product Image



Line Drawing



Product Description

Designed to highlight the beauty of the building, the LEDme® series of lamps is designed to blend seamlessly into the structure of the wall. Efficient energy saving and optimized light output increase the safety and style of the stairs, keeping glare to a minimum on the walls and walkways. IP65 can also be used for indoor and outdoor lighting solutions in wet places. Provides 220V AC direct connection.

Product Features

• Body Material:	Aluminum alloy die-casting
• Optical System:	Louver type light output
• Finish:	Static electricity powder coating
• Adjustable Angle:	/
• Accessories:	/
• Certification:	CCC
• IP Rating:	IP65
• Insulation Level:	Class I
• Operating Temperature:	-20°C~50°C

Product Specifications

• Cut-out:	118x74mm
• LED Type:	SMD
• Source power:	3.22W
• Source Lm:	3000K 190lm
• LED Lifetime:	>40000h-L70 / B10-Ta25°C(LM-80 / TM-21)
• CCT/CRI:	2700K/ 3000K/4000K, Ra80
• SDCM:	3 SDCM
• Input:	220V AC/50Hz
• Dimming:	ON-OFF
• Net Weight:	0.7Kg without packing

Order Model

Model	Power (W)	Max Lumens (lm)	Control Systems	Beam	CCT	Finish
AWL120	LD04 3.2	52	E ON-OFF 220V AC Power Supply	L Louver	27 2700K 30 3000K 40 4000K	WT White BK Black BZ Bronze

Example: AWL120-LD04EL30WT

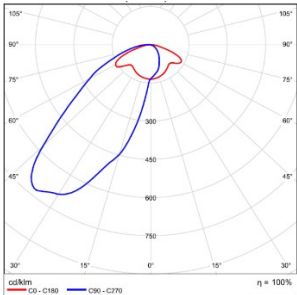
LEDME - MODEL: AWL120
2" Recessed Adjustable Downlight



PROJECT:

TYPE:

LIGHT DISTRIBUTION@3000K LUMINAIRE DATA



MODEL:	AWL120-LD04EL30WT
BEAM	/
ANGLE:	
POWER:	4W
LUMENS:	52 lm
CBCP:	/
EFFICACY:	13 lm/W