

INVISILED PIXELS - MODEL: ALED-P

Linear Luminaires

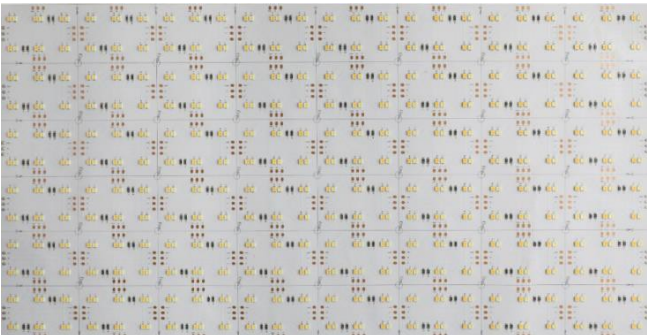
WAC LIGHTING

Responsible Lighting®

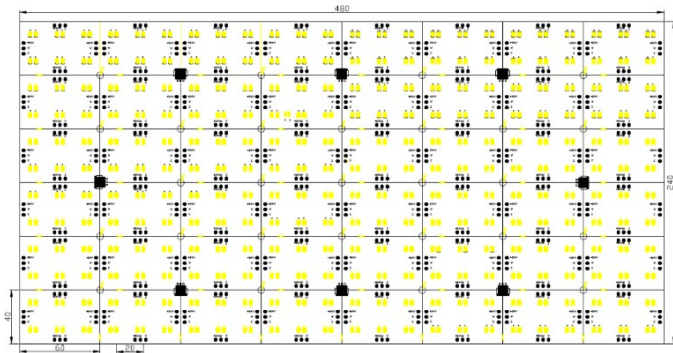
PROJECT:

TYPE:

Product Image



Line Drawing



Product Description

InvisiLED Pixels are designed specifically for illuminated ceilings and walls, supporting single group cutting and convenient installation. They can be cut along the design grid to create creative shapes. Suitable for hotels, villas, commercial spaces, and other places

Product Features

- Body Material: Flexible copper FPCB board
- IP Rating: IP20
- Operating Temperature: -20°C~50°C

Product Specifications

- LED Type: SMD
- LED Power: Full bright state Max 90W/pcs (customizable for low power)
- Size: 240mm\*480mm
- Minimum cropping unit: 20mm\*60mm
- LED Lifetime: >36000h-L70 / B10-Ta25°C (LM-80/ TM-21)
- CCT/CRI: 2700K~6500K Ra90
- Input: 24V DC

Order Model

Model	LED	Size		CCT	Series
ALED-P InvisiLED Pixels	90 90W/pcs Full brightness	2448	240mm*480mm	CC Color Changing	G G Series

Example: ALED-P90-2448CCG

\*Please consult WAC for product specifications and customization requirements

WAC Lighting  
www.waclighting.com (US)  
www.waclighting.com.cn (China)

Headquarters  
44 Harbor Park Drive • Port Washington, NY  
Phone (516) 515.5000 • Fax (516) 515.5050

WAC Lighting(Shanghai)  
14,Lane 299, Bi Sheng Road,Shanghai 201204  
Phone (86.21) 3393.3558 • Fax (86.21) 3362.1598