

INVISILED PIXELS - MODEL: ALED-P

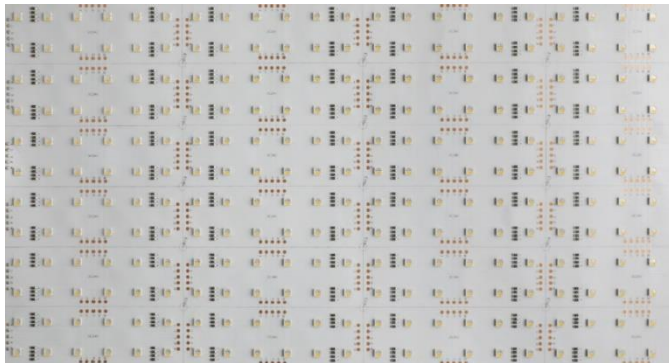
Linear Luminaires

WAC

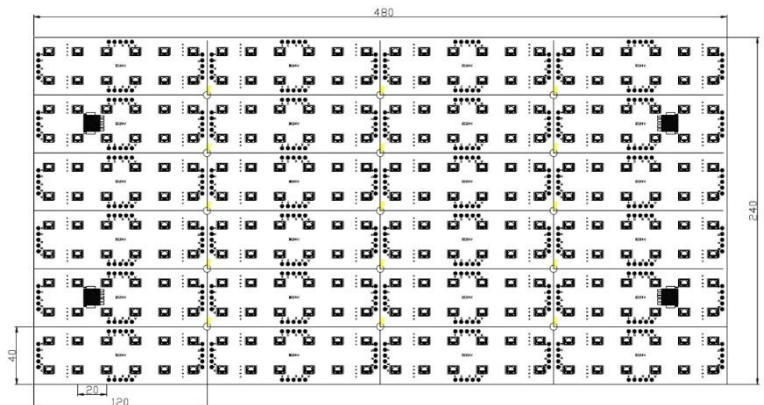
PROJECT:

TYPE:

Product Image



Line Drawing



Product Description

InvisiLED Pixels RGBW is designed for luminous ceiling and luminous wall, easy to install, can be cut along the design grid to make creative modeling. Suitable for hotel villas, commercial space and other places.

Product Description

- Body Material: Flexible copper FPCB board
- IP Rating: IP20
- Operating Temperature: -20°C~50°C

Product Specifications

- LED Type: SMD
- LED Power: Full bright 80W/pcs (R/G/B/W single point 20W)
- Size: 240mm*480mm
- LED Lifetime: >36000h-L70 / B10-Ta25°C (LM-80/TM-21)
- CCT: RGBW
- Input: 24V DC
- Dimming: 0-10V、DMX512、DALI
- Net Weight: Approx. 0.3Kg, without packaging

Order Model

Model	LED	Size	CCT	Series
ALED-P InvisiLED Pixels	80 80W/pcs	2448 240mm*480mm	F3 RGBW (3000K) F4 RGBW (4000K)	G G Series

Example: ALED-P80-2448F3G

* Please consult WAC for product specifications and customization requirements

WAC Lighting
www.waclighting.com (US)
www.waclighting.com.cn (China)

Headquarters
44 Harbor Park Drive • Port Washington, NY
Phone (516) 515.5000 • Fax (516) 515.5050

WAC Lighting(Shanghai)
14,Lane 299, Bi Sheng Road,Shanghai 201204
Phone (86.21) 3393.3558 • Fax (86.21) 3362.1598

WAC Lighting reserves the right to periodically design and update products. 2021-01-26