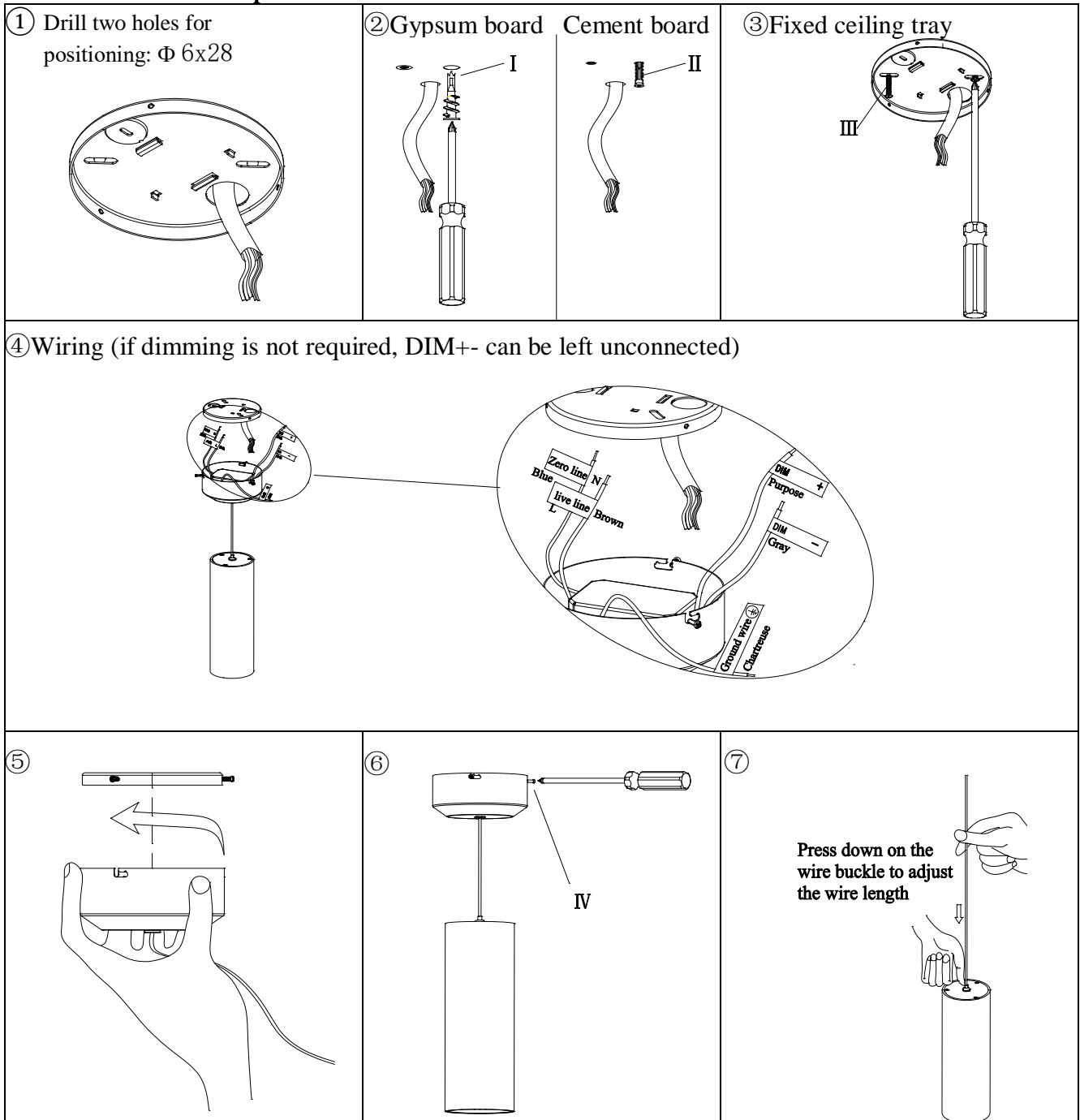


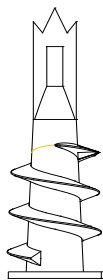
Installation Statement:

1. Please read the instruction manual carefully before installation;
2. Installed by professional personnel;
3. To avoid the risk of electric shock, please confirm to turn off the power before installing, maintaining, or replacing the lighting fixtures;
4. This lamp is only suitable for indoor installation and use (cannot be used in humid environments);
5. Please keep this manual for reference and use.

Installation method and steps:

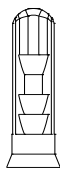


Accessories package parts:



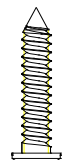
I

Num:2PCS+1



II

Num:2PCS+1



III

Num:2PCS+1



IV

Num: 2PCS