

LIGNE- MODEL: AOC3N

Linear Luminaires

WAC LIGHTING

Responsible Lighting®

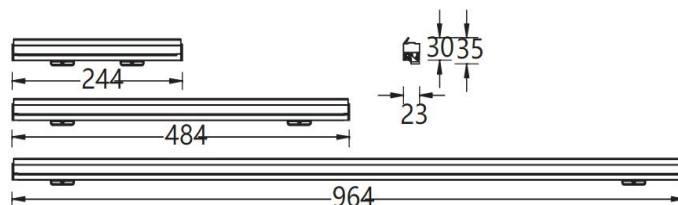
Project Name:

Type:

Product Image



Line Drawing



Product Description

The LIGNE III features a specialized lens or polarized optical system combined with an optimized LED arrangement, delivering uniform wall illumination with no dark spots or glare. It offers high-efficiency heat dissipation, low energy consumption, and a soft anti-glare lighting effect. With a DC 24V input, fixtures can be connected end-to-end for continuous installation. Ideal for recessed linear wall-washing applications in offices, exhibition halls, hotels, and commercial public areas.

Product Features

- **Body Materials:** Aluminum die-casting lamp body
- **Optical System:** Lens
- **Finishes:** Electrostatic powder coating
- **Objection Direction:** /
- **Accessory/Bracket:** see attachment
- **Certification:** CQC
- **IP Rating:** IP20
- **Insulation Level:** Class III
- **Operating Temperature:** -20°C— 40°C

Product Specifications

- **Shading Angle:** /
- **LED Type:** SMD LED
- **Source Lm:** 1m:5000lm@3000K; 1m:5600lm@4000K >
- **LED Lifetime:** 50,000h-L70 /B10-Ta25°C(LM-80/TM-21)
- **CCT/CRI:** 2700K/3000K/4000K, Ra90
- **SDCM:** 3 SDCM
- **Input:** 24V DC
- **Dimming:** User-supplied dimming module(Matching tests must be done with the project site systems)
- **Net Weight:** Approx. 0.5Kg/m, without packaging

Order Model

Model	Length (mm)	Power (W)	Driver	Beam	CRI	CCT	Finish
AOC3N	02 244	05 05W	N No Driver	W Wall Wash	9 Ra90 A Ra97(Ra≥95)	27 2700K 30 3000K 40 4000K	WT White BK Black
	05 484	10 10W					
	10 964	20 20W					

Example: AOC3N-1020NW930WT

Note: Maximum continuous connection length: 5m.

LIGNE- MODEL: AOC3N

Linear Luminaires

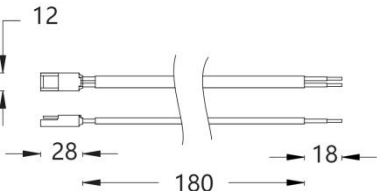
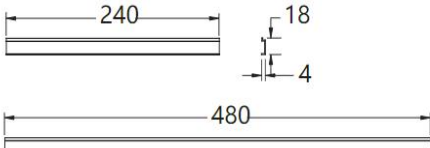
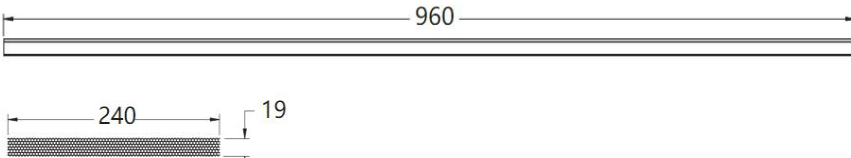
WAC LIGHTING

Responsible Lighting®

Project Name:

Type:

Accessory

Model	Item	Dimensions
AOC3N-PC-CT002F	External quick-connect lead	
AOC3N-CG025-WT AOC3N-CG025-BK	(Honeycomb faceplate + honeycomb louvr) 240mm	
AOC3N-CG050-WT AOC3N-CG050-BK	(Honeycomb faceplate + honeycomb louvr) 480mm	
AOC3N-CG100-WT AOC3N-CG100-BK	(Honeycomb faceplate + honeycomb louvr) 960mm	